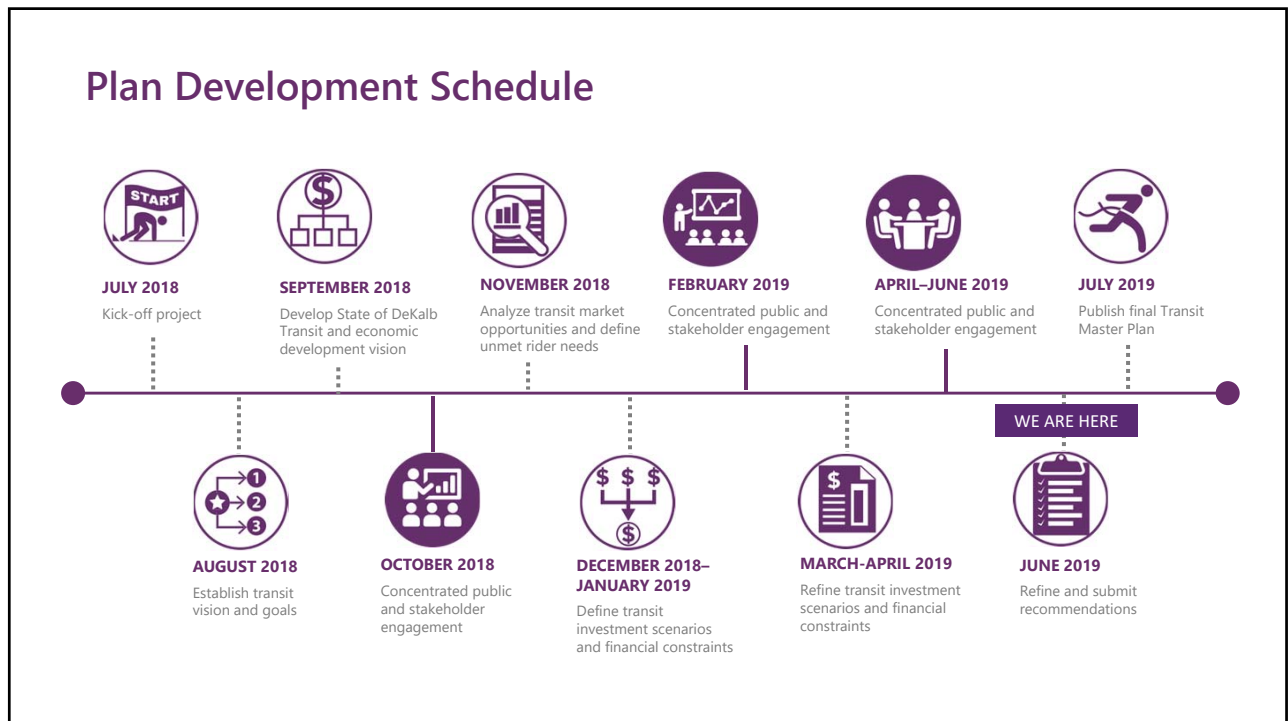


**Meeting Agenda**  
Stakeholder Advisory Committee Meeting

---

- Introduction
- Project Evaluation and Scenario Development
- Financial Modeling
- Break
- Discussion
- Next Steps

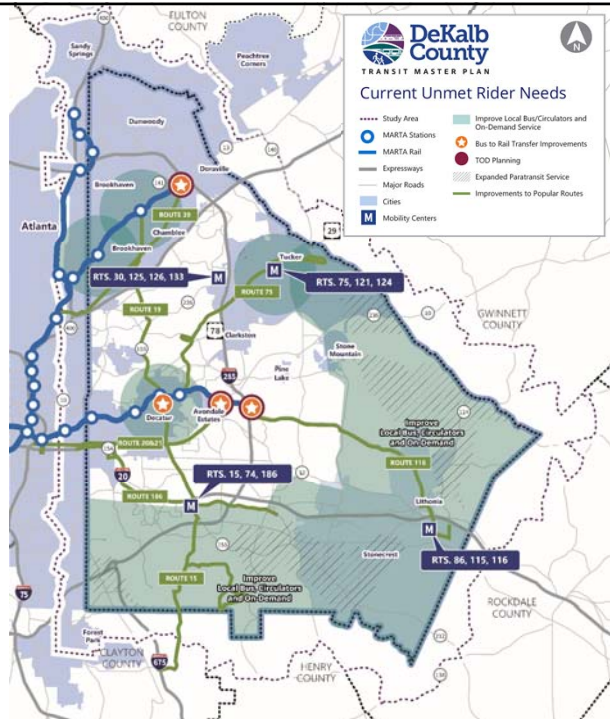
*No Boundaries—Today's Preparation, Tomorrow's Achievement*



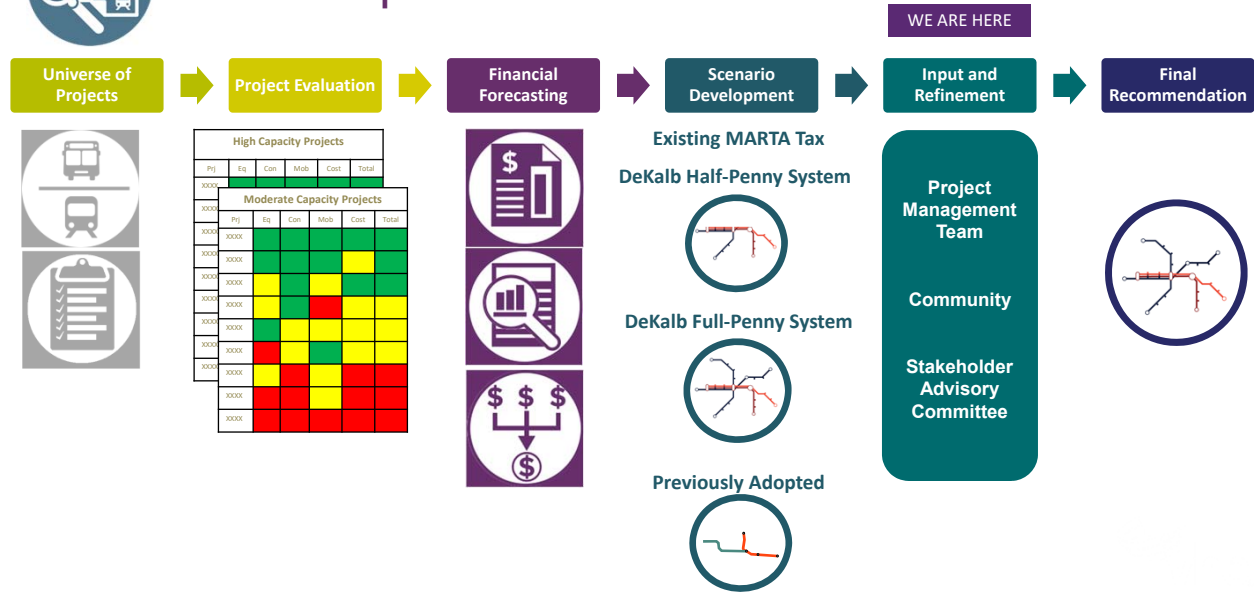


## Current Unmet Rider Needs

- Paratransit Expansion
- Improvements to Bus Service in Popular Corridors
- Mobility Centers
- Expanded Local Bus Service, Bus Circulators, and On-Demand Service
- Bus-to-Rail Transfer Improvements
- First Mile/Last Mile Connectivity



## Plan Development Process





# PROJECT EVALUATION AND SCENARIO DEVELOPMENT

DeKalbTransitMasterPlan.com

## Universe of Projects

3 Heavy Rail (HRT), 9 Light Rail (LRT), 13 Bus Rapid Transit (BRT), & 15 Arterial Rapid Transit (ART) Projects

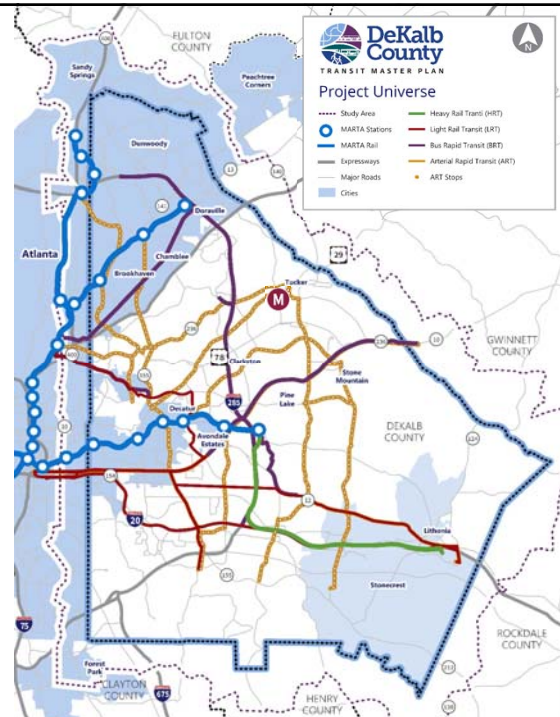
**\$20 B** in Capital Costs

**+** **\$4.8 B** in O&M Costs\*

---

**\$25 Billion**

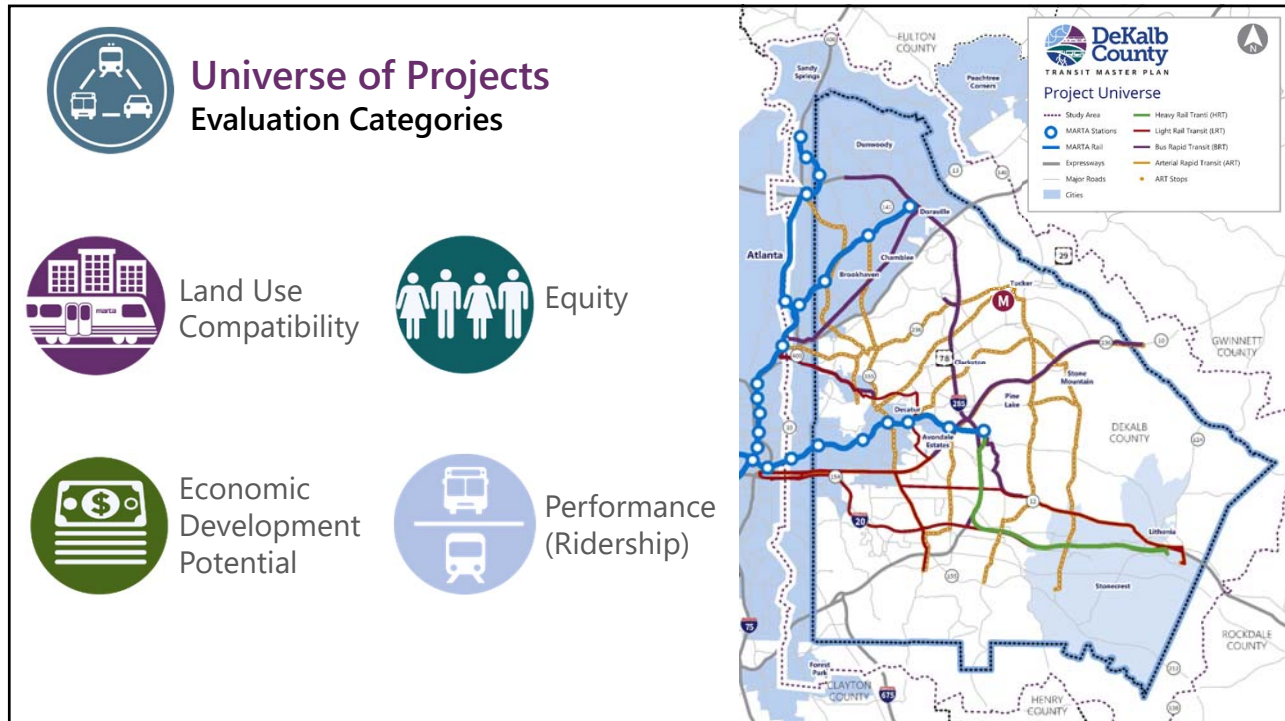
\*Includes sustaining capital funding




**DeKalb County**  
TRANSIT MASTER PLAN  
Project Universe

- Study Area
- MARTA Stations
- MARTA Rail
- Expressways
- Major Roads
- Cities
- Heavy Rail Transit (HRT)
- Light Rail Transit (LRT)
- Bus Rapid Transit (BRT)
- Arterial Rapid Transit (ART)
- ART Stops







## Project Evaluation – Land Use

### SketchTransit land use score

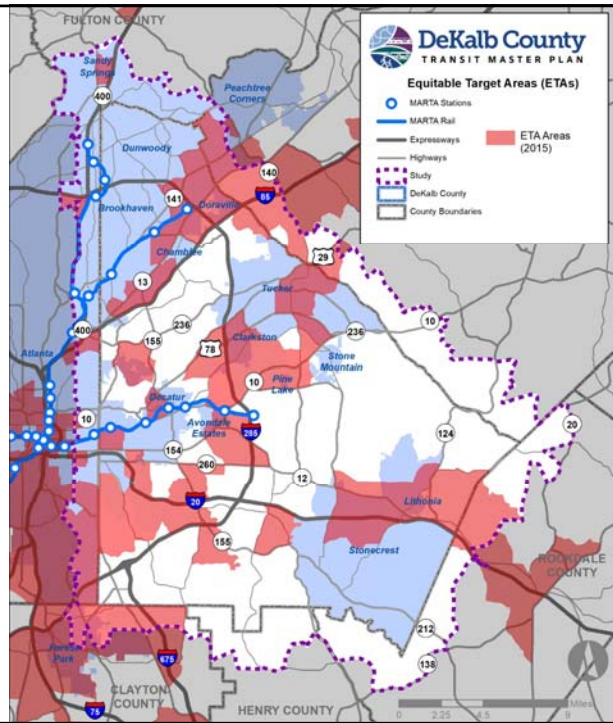
- Score shows route compatibility with land use densities
- Indicates whether development patterns are supportive of high-capacity, moderate-capacity, or local bus service
- Based on underlying trip densities sourced from the ARC's Activity Based Model (ABM)



## Project Evaluation – Equity

### Equity Analysis

- ARC’s Equitable Target Areas (ETAs)
- High concentrations of minority and low-income populations
- Evaluation Measure: Project alignment miles that serve designated ETAs



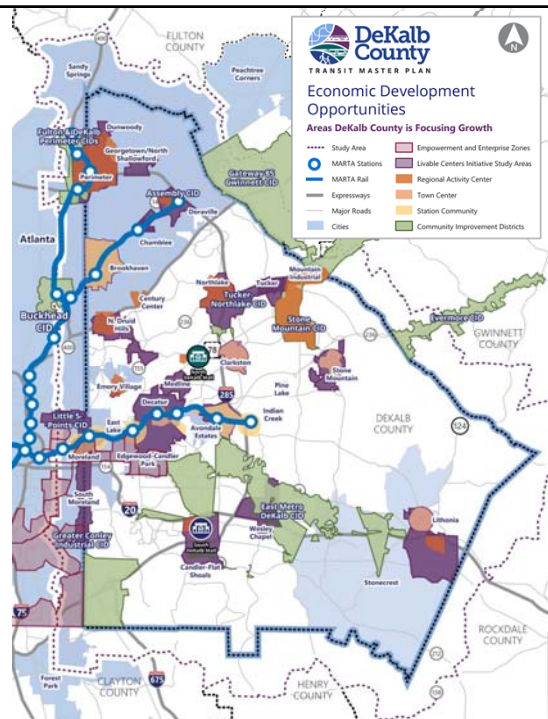
## Project Evaluation – Economic Development Potential

### Evaluation Measure

Acres of economic development zones served by project

### Economic Development Zones

- Empowerment Zones
- Enterprise Zones
- Emerging Employment Centers (based on County’s Strategic Economic Development Plan)
- Community Improvement Districts (CIDs)
- Livable Centers Initiative (LCI) Areas
- ARC-designated Activity Centers





## Project Evaluation – Performance (Ridership)

### Project Performance (Ridership) Measure

- Ridership estimates were developed through a sketch model calibrated for each transit mode
  - Station dwell times
  - Average travel speeds
  - Headways
  - Hours of peak and off-peak service
- Model inputs include:
  - Existing (2015) and projected (2040) population and employment within project service area
  - Alignment miles
  - Number of stations
- Evaluation Measure: Number of riders per mile of project alignment

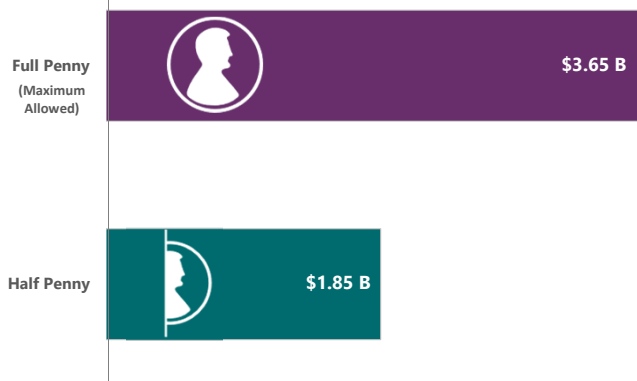


## Financial Forecasting and Scenario Development

### Potential Sales Tax Revenue under HB 930 (over 30-years in 2019 dollars)

#### DeKalb County Sales Tax Rate

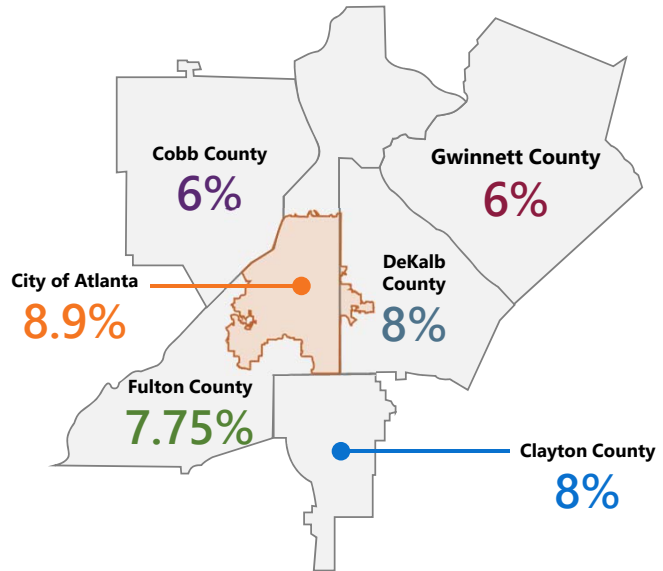
- State of Georgia – 4%
- EHOST (Equalization Homestead Option Sales Tax) – 1%
- Educational – 1%
- SPLOST – 1%
- MARTA – 1%
- Current Total – 8%**





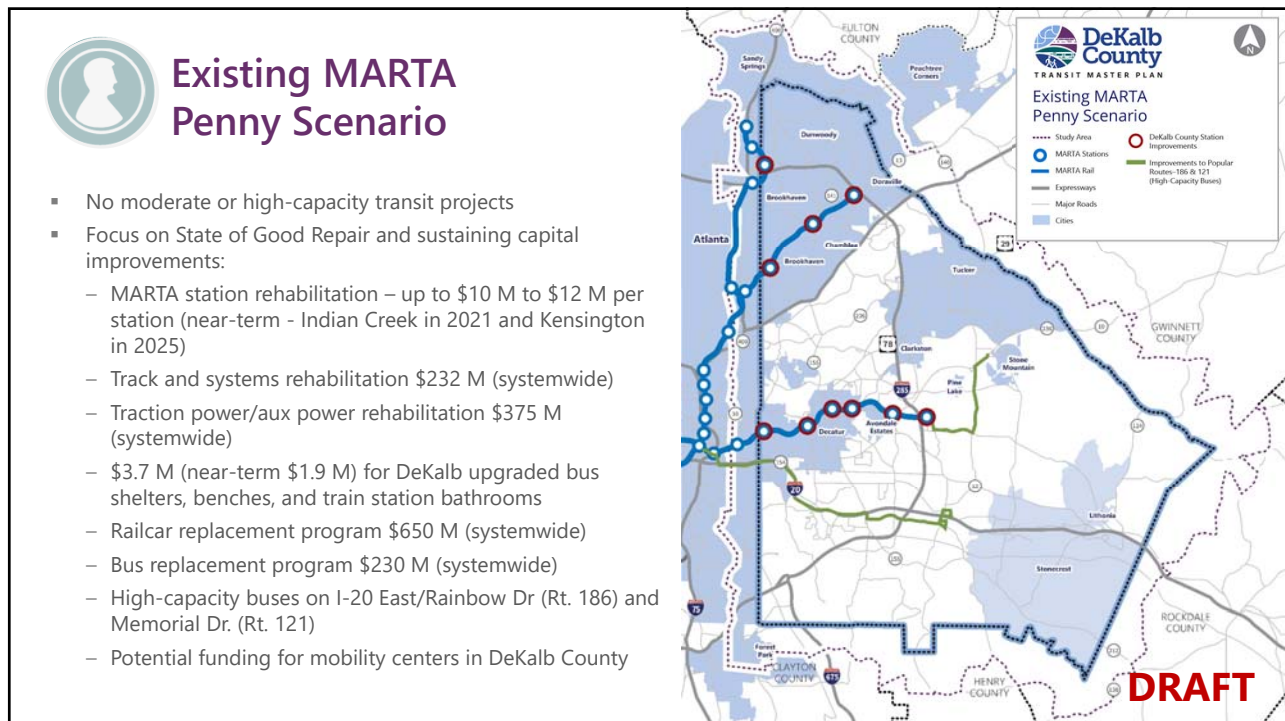
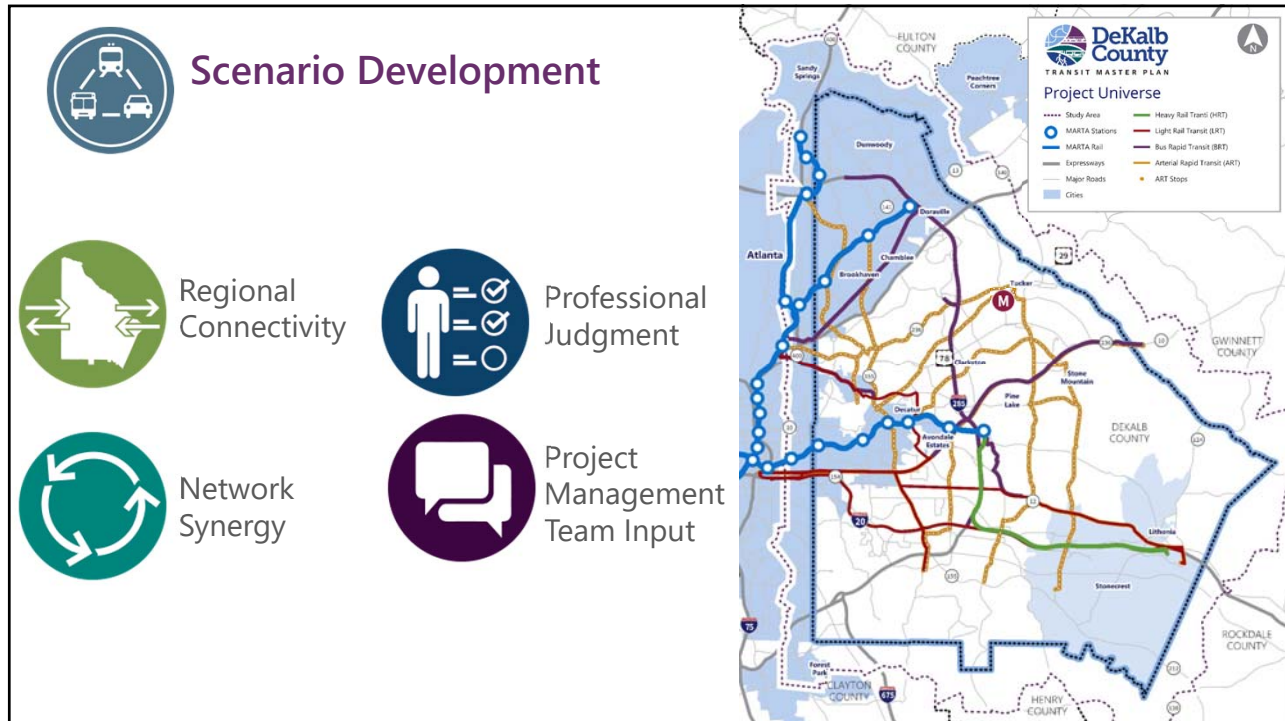
## Current Sales Tax Rates

All but 4 counties in Georgia are at 7.0% or 8.0% sales tax



## SCENARIO DEVELOPMENT








## DeKalb Half-Penny System Scenario

30-Year Investment Plan

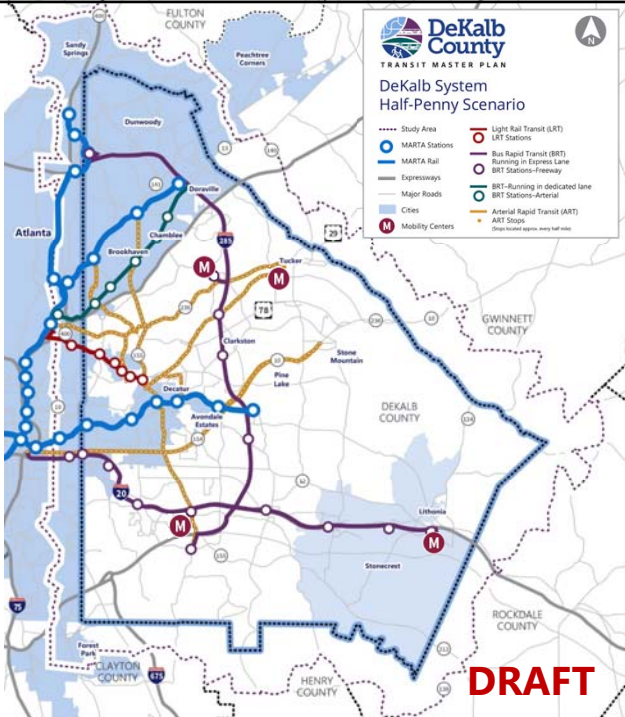
14 Projects Total

1 LRT, 5 BRT, and 8 ART Projects

139 Project Miles

LRT
BRT
ART






## DeKalb Full-Penny System Scenario

30-Year Investment Plan

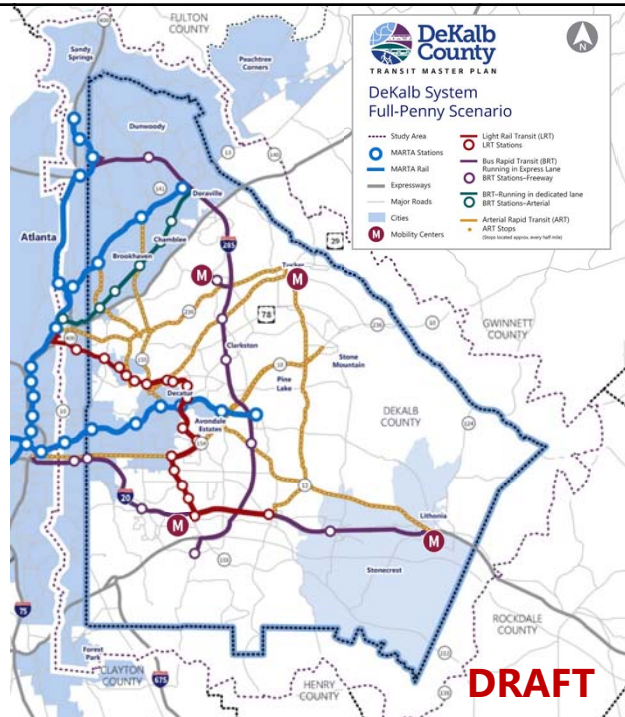
16 Projects Total

4 LRT, 4 BRT, and 8 ART Projects

180 Project Miles

LRT
BRT
ART



## Previously Adopted Scenario

Based on adopted MARTA LPAs for I-20 East and Clifton Corridor

3 Projects

1 HRT, 1 LRT, and 1 BRT Projects

37 Total Project Miles



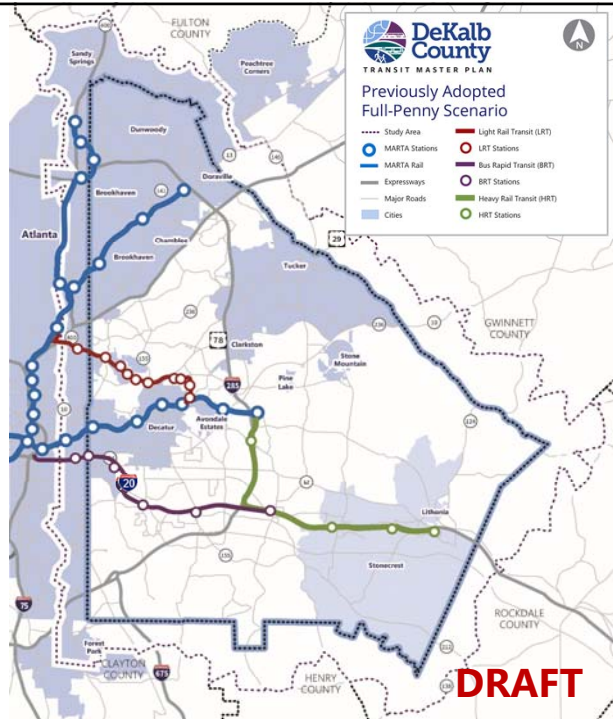
HRT



LRT



BRT



# FINANCIAL MODELING

DeKalbTransitMasterPlan.com



## Assumptions

	Assumption Value	Source
Sales Tax Term	30 years	HB 930
Sales Tax Start Year	FY2021	Subject to change
First Year of Construction	FY2023	Subject to change
Contribution to State General Fund	1% per year	HB 930
Financing Source	Long term bonds	MARTA
Frequency of Issuances	Varied based on scenario	Subject to change
Repayment Term	25 years or less	HB 930
Interest Rate	5.5%	MARTA
Avg. Debt Service Coverage Ratio (DSCR)	>2.0	MARTA
Issuance Cost	1% of gross proceeds	MARTA
Debt Service Reserve Fund Cost (DSRF)	2% of gross proceeds	MARTA

## Assumptions Continued

	Assumption Value	Source
Capital Cost Escalation	3%	Industry, subject to change
O&M Escalation	3%	Industry, subject to change
Federal Funding Contribution (Capital Projects)	35%	PMT
State Funding Contribution (Capital Projects)	0%	PMT
Farebox Recovery	27%	NTD



## Funding Options for DeKalb County

Funding Option / Scenario	Sales Tax Rate
Option 1 – Existing MARTA Penny Scenario	None
Option 2 – Half-Penny System Scenario	½ penny
Option 3 – Full-Penny System Scenario	1 penny
Option 4 – Previously Adopted Scenario	1+ penny

## Funding Options Results

Funding Options	Sales Tax Rate	Investment by Public (YOES)	Benefit to Public (YOES)
Option 1 – Existing MARTA Penny Scenario	None	N/A	N/A
Option 2 – Half-Penny System Scenario	½ penny	\$3,000 million	\$3,200 million
Option 3 – Full-Penny System Scenario	1 penny	\$6,000 million	\$7,500 million
Option 4 – Previously Adopted Scenario	1+ penny	\$7,000+ million	N/A

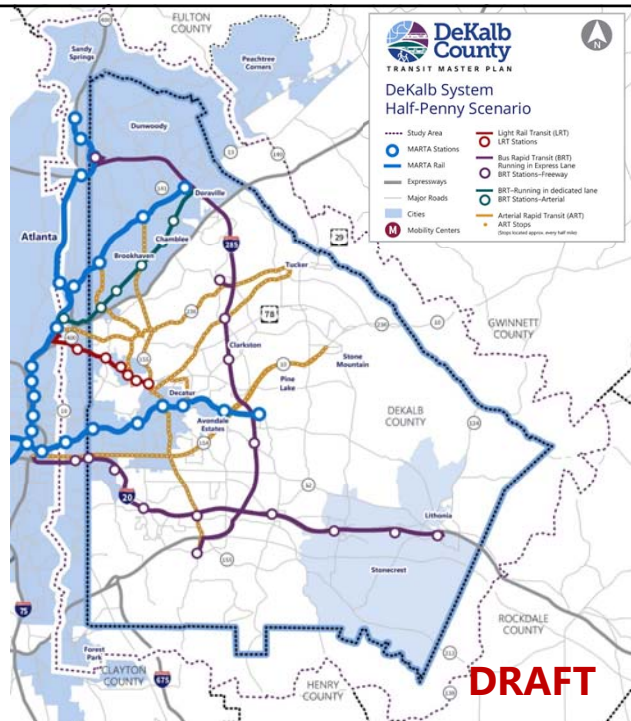


## DeKalb Half-Penny System Scenario

- 1/2-penny sales tax
- 15 projects: 9 ART, 5 BRT, 1 LRT
- Healthy contingency

Net Capital Cash Flow (YOE\$)	
Total Capital Sources	\$2,900 million
Total Capital Uses	\$2,300 million
<b>Net Capital Cash Flow</b>	<b>\$610 million</b>
Net O&M Cash Flow (YOE\$)	
Total O&M Sources	\$1,200 million
Total O&M Uses	\$1,200 million
<b>Net O&amp;M Cash Flow</b>	<b>\$20 million</b>

Note: Totals may not add due to rounding

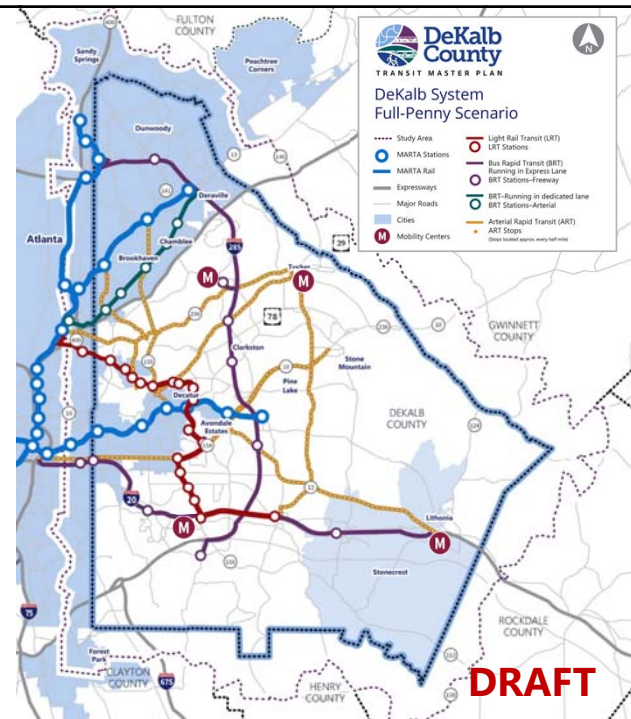


## DeKalb Full-Penny System Scenario

- 1 penny sales tax
- 16 projects: 8 ART, 4 BRT, 4 LRT
- Tighter budget, less contingency than Option 2 Half-Penny System Scenario

Net Capital Cash Flow (YOE\$)	
Total Capital Sources	\$8,200 million
Total Capital Uses	\$8,200 million
<b>Net Capital Cash Flow</b>	<b>\$ -</b>
Net O&M Cash Flow (YOE\$)	
Total O&M Sources	\$3,000 million
Total O&M Uses	\$2,800 million
<b>Net O&amp;M Cash Flow</b>	<b>\$200 million</b>

Note: Totals may not add due to rounding



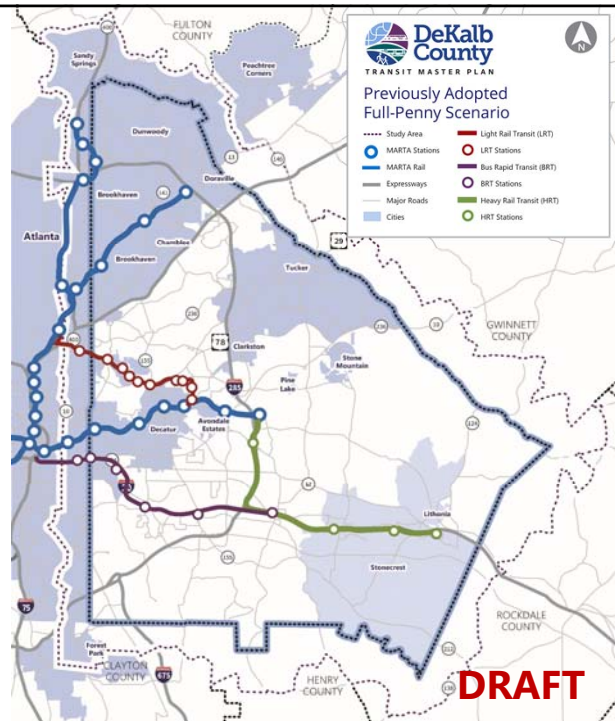


## Previously Adopted Scenario

- 1+ penny sales tax
- 4 projects: 1 HRT, 2 LRT, 1 BRT
- Cannot be supported fully by an HB 930 sales tax in DeKalb County

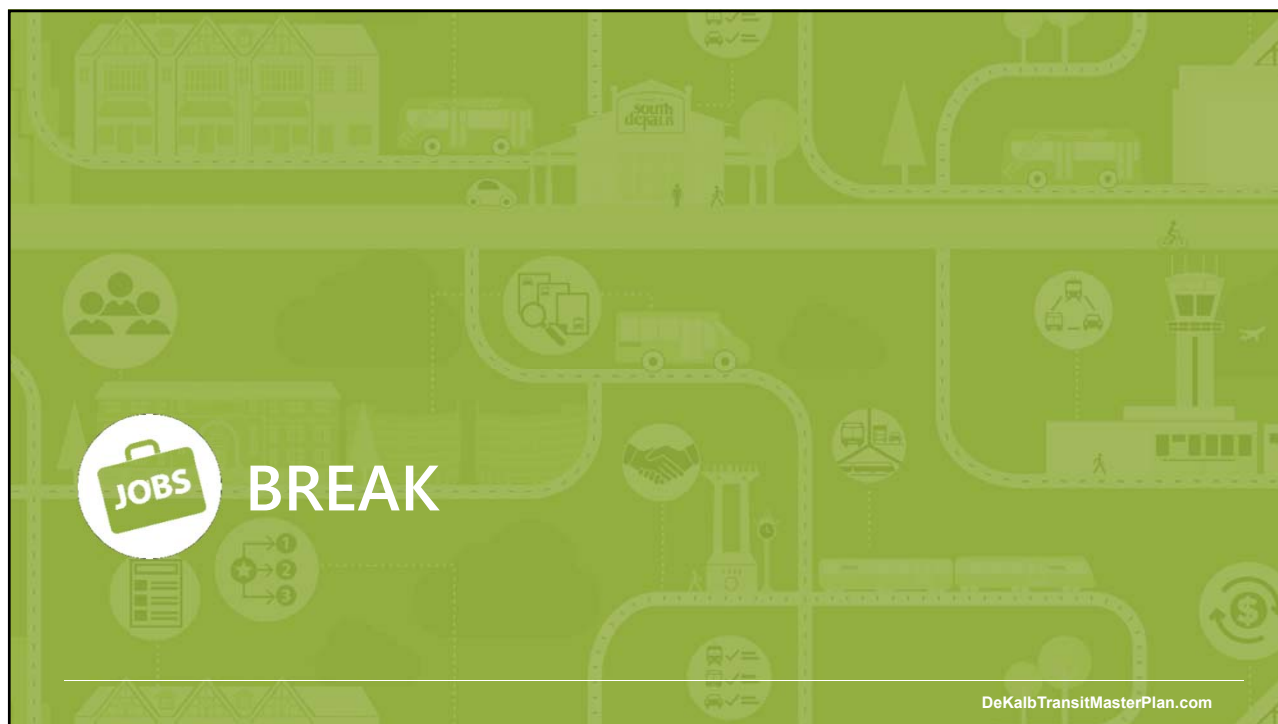
Net Capital Cash Flow (YOE\$)	
Total Capital Sources	\$14,100 million
Total Capital Uses	\$17,500 million
<b>Net Capital Cash Flow</b>	<b>(\$3,500 million)</b>
Net O&M Cash Flow (YOE\$)	
Total O&M Sources	\$3,000 million
Total O&M Uses	\$4,100 million
<b>Net O&amp;M Cash Flow</b>	<b>(\$1,100 million)</b>

*Note: Totals may not add due to rounding*



## Conclusions

- Existing MARTA Penny Scenario
  - Emphasis on State of Good Repair
- Half-Penny System Scenario
  - Minimal light rail transit
  - Relies primarily on arterial rapid transit and bus rapid transit
- Full-Penny System Scenario
  - Emphasis on DeKalb County light rail transit network (North to South)
- Previously Adopted Scenario/1+ Penny
  - Emphasis on heavy rail transit
  - Cannot be supported fully by an HB 930 sales tax in DeKalb County
    - Would require legislative change



JOBS BREAK

DeKalbTransitMasterPlan.com

This slide features a green background with a pattern of white icons related to transit and business. The icons include houses, a bus, a 'south dekalb' station, a person with a bicycle, a truck, a person with a laptop, a person with a briefcase, a person with a checklist, a person with a dollar sign, and a person with a handshake. The text 'JOBS BREAK' is prominently displayed in the center-left, with 'JOBS' inside a white circle with a briefcase icon and 'BREAK' in large white letters. The website 'DeKalbTransitMasterPlan.com' is at the bottom right.



DISCUSSION

DeKalbTransitMasterPlan.com

This slide features a teal background with a pattern of white icons related to transit and business. The icons include houses, a bus, a 'south dekalb' station, a person with a bicycle, a truck, a person with a laptop, a person with a briefcase, a person with a checklist, a person with a dollar sign, and a person with a handshake. The text 'DISCUSSION' is prominently displayed in the center-left, with a circular icon containing a dollar sign and arrows. The website 'DeKalbTransitMasterPlan.com' is at the bottom right.

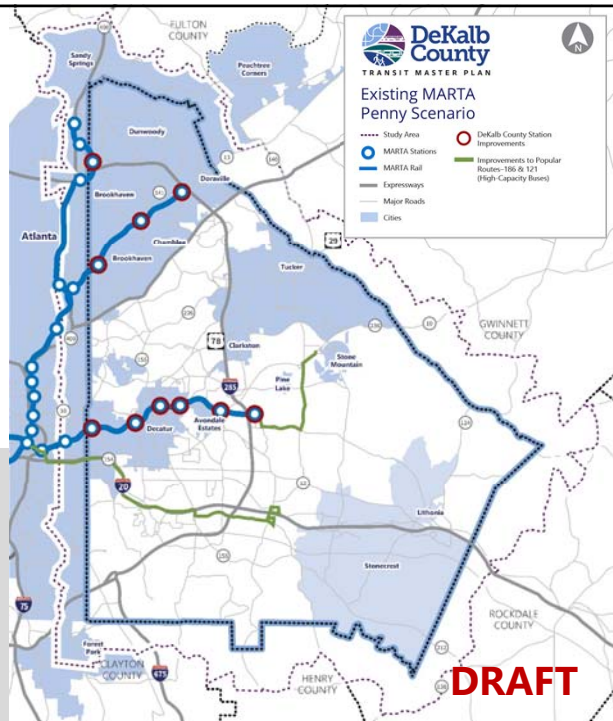




## Existing MARTA Penny Scenario

- Does this scenario benefit you?
- Would you support funding this scenario?
- Does this scenario align with your vision for the future of DeKalb County?

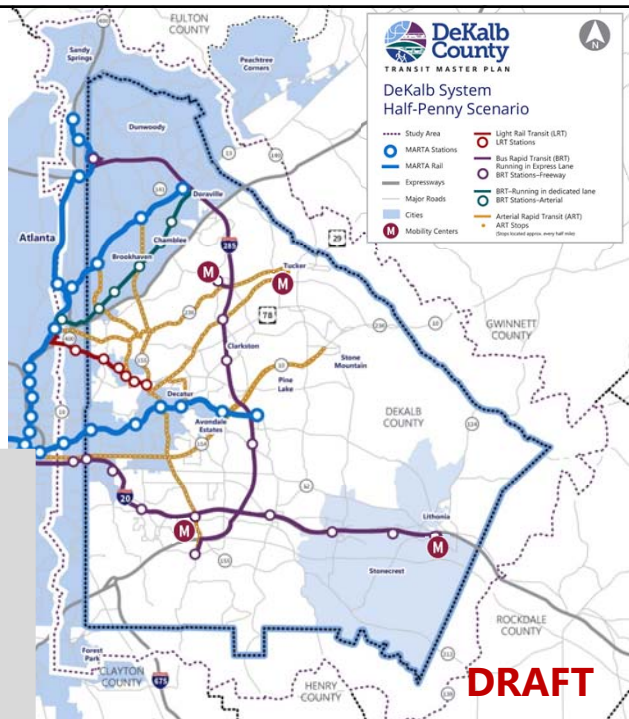
- Emphasis on State of Good Repair



## DeKalb System Half-Penny Scenario

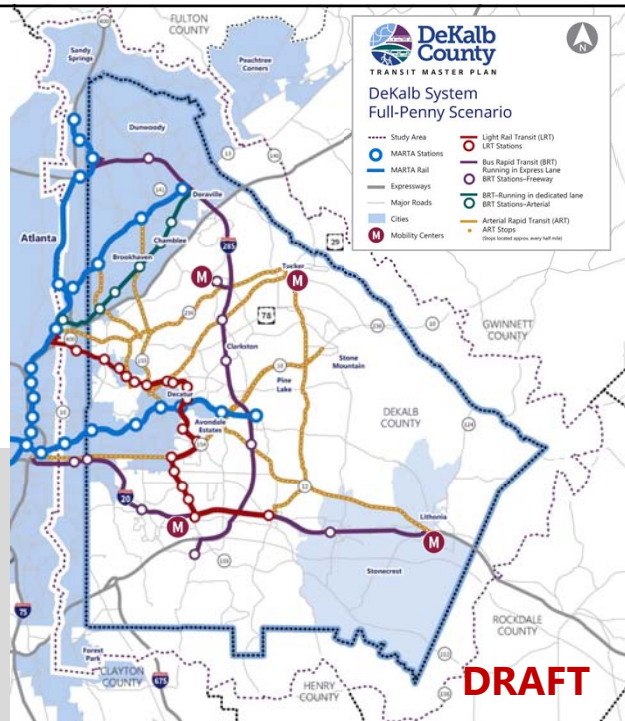
- Does this scenario benefit you?
- Would you support funding this scenario?
- Does this scenario align with your vision for the future of DeKalb County?

- Minimal light rail transit
- Relies primarily on arterial rapid transit and bus rapid transit



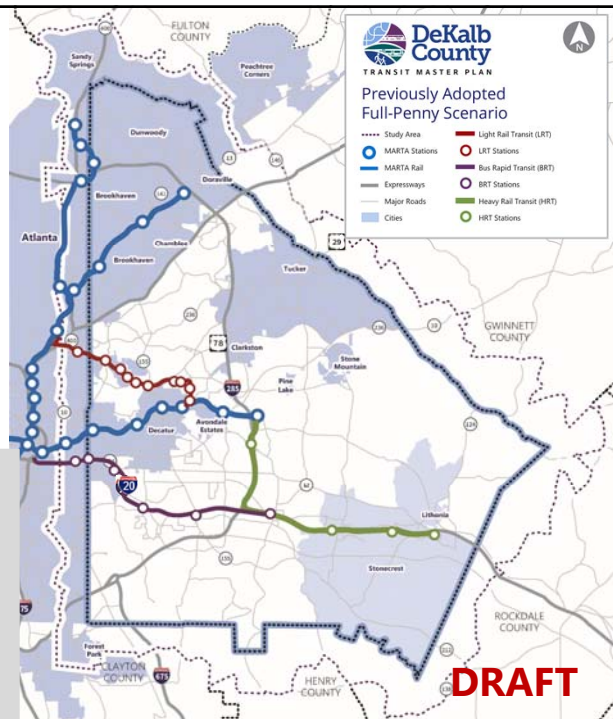
## DeKalb Full-Penny System Scenario

- Does this scenario benefit you?
  - Would you support funding this scenario?
  - Does this scenario align with your vision for the future of DeKalb County?
- Emphasis on DeKalb County light rail transit network (North to South)




## Previously Adopted Scenario

- Does this scenario benefit you?
  - Would you support funding this scenario?
  - Does this scenario align with your vision for the future of DeKalb County?
- Emphasis on heavy rail transit
  - Cannot be supported fully by an HB 930 sales tax in DeKalb County
    - Would require legislative change







## Wrap Up

<b>MAY 29</b>	Stakeholder Advisory Committee Input
<b>JUNE 4, 5, 6</b>	Input from Public
<b>JUNE</b>	Documentation
<b>JUNE/JULY</b>	Input from Cities
<b>JULY</b>	Final Recommendation to BOC
<b>SUMMER</b>	Coordination with The ATL



## Open Houses – Help Spread the Word

### June 4, 6:00–7:30 pm

**Toco Hill Library**  
1282 McConnell Drive  
Decatur, GA 30033

**MARTA Bus Routes:** 8, 19

### June 5, 6:00–7:30 pm

**Stonecrest Library**  
3123 Klondike Road  
Lithonia, GA 30038

**MARTA Bus Routes:** 86, 115, 116

### June 6, 6:30–8:00 pm

**Exchange Recreation Center**  
2771 Columbia Drive  
Decatur, GA 30033

**MARTA Bus Routes:** 114, 186

